



Where  
Door Panels  
Meet Arts

[www.vetropan.com.tr](http://www.vetropan.com.tr)

[www.vetropan.com.tr](http://www.vetropan.com.tr)

Where  
Door Panels  
Meet Arts



A top qualified team with over 15 years of experience in producing door panels united together in year 2016 under the wings of Vetropan pursuing the mission to provide the highest quality PVC door panels for PVC professionals, who seek elegant and unique PVC door panels matching their requirements. To accomplish this mission Vetropan uses the highest quality materials, runs fully controlled production process from start to finish and makes sure each produced panel matches the requested quality criterias.

Vetropan also offers tailormade solutions to fulfill different design requests. Would like to feel the difference?  
Don't hesitate to ask for a sample production.

# T-PANEL

**PVC Sheet:** 1,3mm | Surface: Silk Matt | Color

**Shade:** RAL 9016 of medium range

**PVC Laminates:** 1,4-1,5mm | Surface: Glossy |

**Lamination Options:** Anthrazit Gray, Golden Oak, Mahagony of LG Film.

**ALU Sheet:** 1,5mm | min. 5005 Alloy | Akzo Nobel Qualicoat Class 1 Electrostatic Powder Coating

**Glasses:** 3/3 Laminated Glass on exterior section, interior glass decoration is as given.

**Pvc** Available as PVC Door Panels

**Alu** Available as ALU Door Panels







Frosted Glass with Steel Element



Frosted



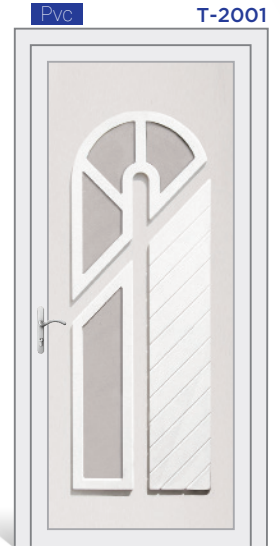
Frosted



Frosted Glass with Steel Element



Solid



Satinated



Frosted



Frosted



Frosted



Digital Print On  
Satinated Glass



Frosted



Frosted



Frosted

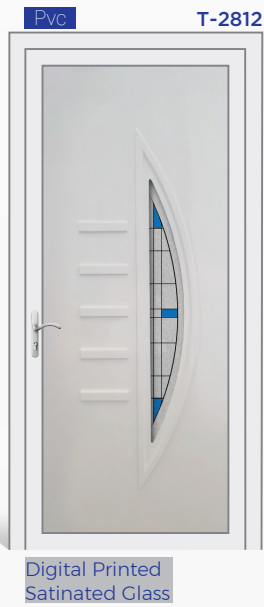


Frosted

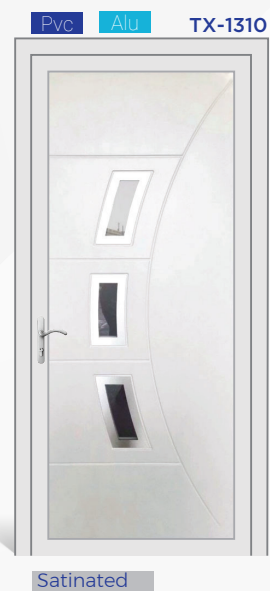


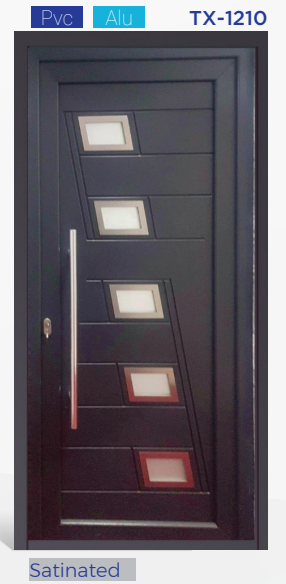
T-PANEL





# Where Door Panels Meet Arts





# S-PANEL

**PVC Sheet:** 1,5mm | Surface: Silk Matt | Color

**Shade:** RAL 9016 of medium range

**PVC Laminates:** 1,4-1,5mm | Surface: Glossy |

**Lamination Options:** Anthrazit Gray, Golden Oak, Mahagony of LG Film.

**ALU Sheet:** 1,5mm | min. 5005 Alloy | Akzo Nobel Qualicoat Class 1 Electrostatic Powder Coating

Glasses: 3/3 Laminated Glass on exterior section, interior glass decoration is as given.

**Pvc** Available as PVC Door Panels

**Alu** Available as ALU Door Panels

**Pvc** **Alu** D-4014



Digital Print on  
Satinated Glass

**Pvc** **Alu** D-7010



Digital Print on  
Satinated Glass

**Pvc** **Alu** D-8727



Digital Print on  
Satinated Glass

**Pvc** **Alu** D-8874



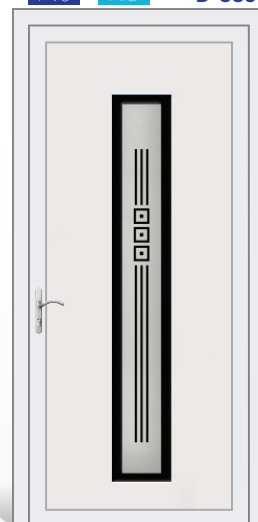
Digital Print on  
Satinated Glass

**Pvc** **Alu** D-8890



Digital Print on  
Satinated Glass

**Pvc** **Alu** D-8891



Digital Print on  
Satinated Glass

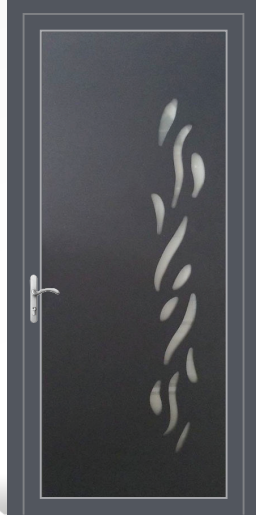


Pvc Alu SX-7021



Satinated

Pvc Alu S-1100



Satinated

Pvc Alu S-3910



Satinated

Pvc Alu S-4010



Satinated

Pvc Alu S-4015



Satinated

Pvc Alu S-4070



Satinated

Pvc Alu S-5040



Satinated

Pvc Alu S-7210



Satinated

Pvc Alu S-9050



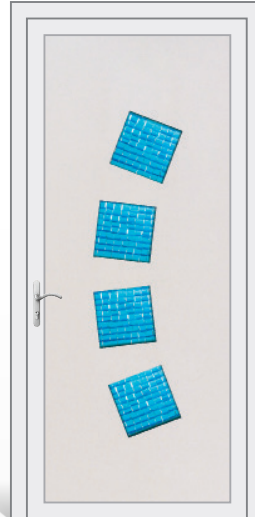
Satinated

Pvc Alu S-9060



Satinated

Pvc Alu S-9061



Fused Glass

Pvc Alu S-9070



Satinated

# X-PANEL

**PVC Sheet:** 1,5mm | Surface: Silk Matt | Color

**Shade:** RAL 9016 of medium range

**PVC Laminates:** 1,4-1,5mm | Surface: Glossy |

**Lamination Options:** Anthrazit Gray, Golden Oak, Mahagony of LG Film.

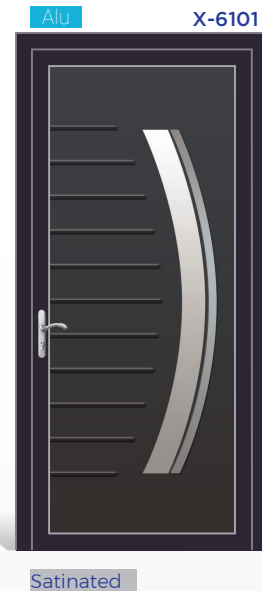
**ALU Sheet:** 1,5mm | min. 5005 Alloy | Akzo Nobel Qualicoat Class 1 Electrostatic Powder Coating

**Glasses:** 3/3 Laminated Glass on exterior section, interior glass decoration is as given.

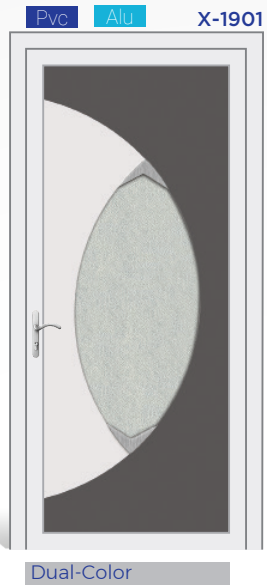
**Inox:** 304 Stainless Steel, applied on both sides.

**Pvc** Available as PVC Door Panels

**Alu** Available as ALU Door Panels









Pvc Alu X-4015

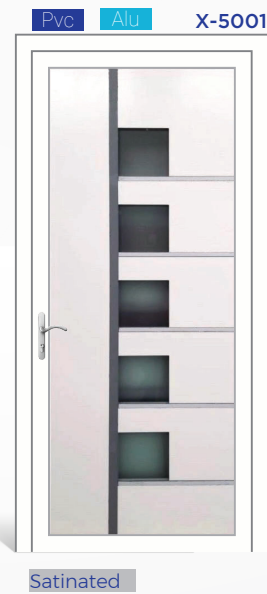


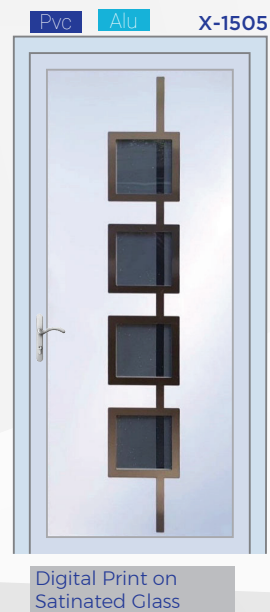
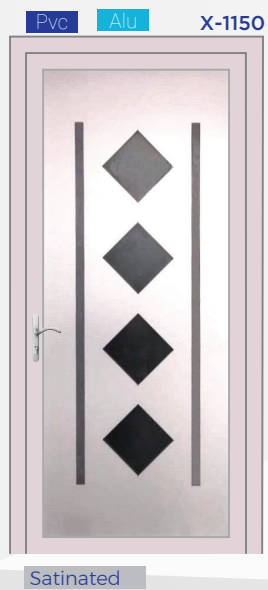
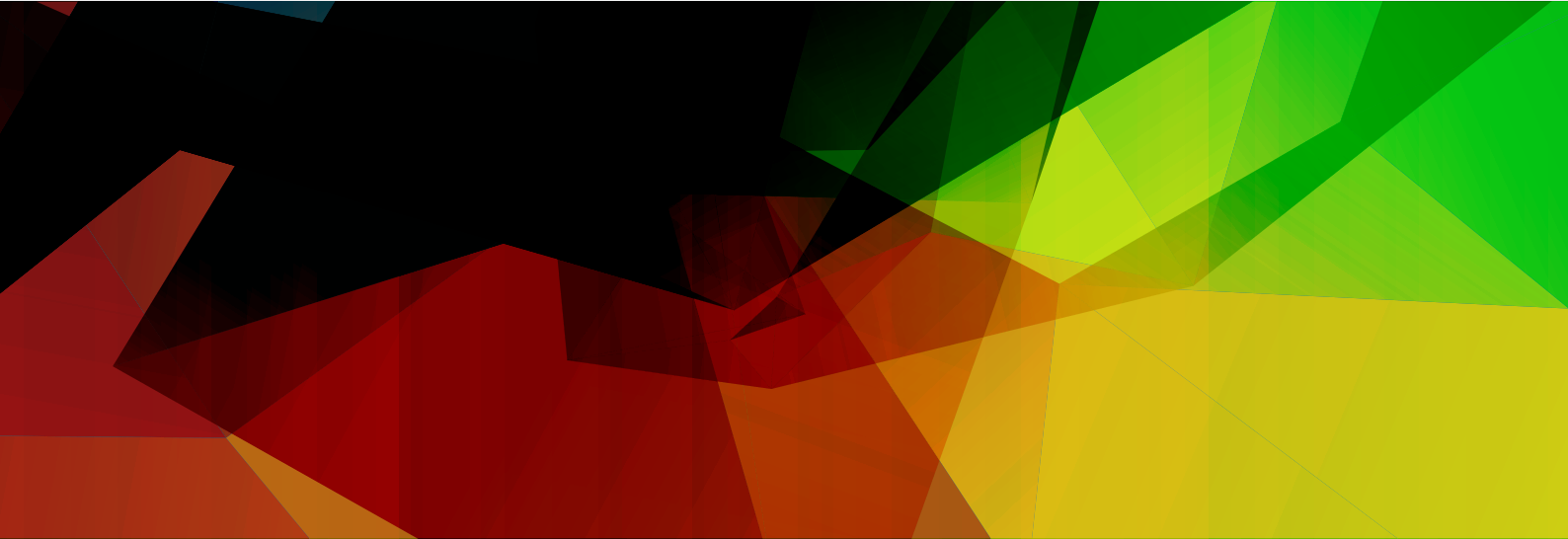
Satinated

## X-PANEL











Where  
Door Panels  
Meet Arts



# SOLID AND HALF PANEL

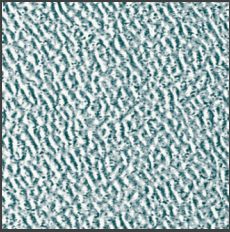




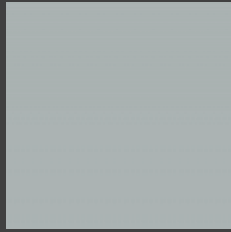
Where  
Door Panels  
Meet Arts

## Technical Info

### Glazing Options

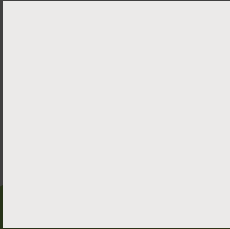


Frosted

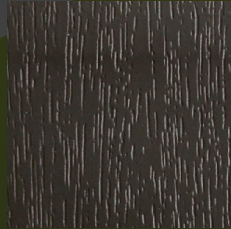


Satinated

### Color Options



Standart white



Anthracite Gray



Golden Oak

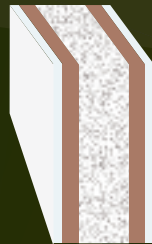


Mahogany

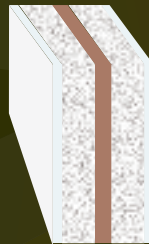
### Composition Options



EPS



MDF+EPS+MDF



EPS+MDF+EPS

Panels are available in any thickness

\* EPS : 28-30 Kg/m<sup>3</sup> white styropor

\* MDF : 3mm



Where  
Door Panels  
Meet Arts

[www.vetropan.com.tr](http://www.vetropan.com.tr)

Bu tanıtım materyali, KOSGEB  
desteđi ile Tasarım Alanı  
tarafından hazırlanıp, 27.09.2022  
tarihinde 1000 adet bastırılmıştır.

a : Saray Mh. Keresteciler Sit. 15.Cd. No:5.  
Kazan / Ankara / TURKEY  
t : +90 537 057 10 92  
e : [info@vetropan.com.tr](mailto:info@vetropan.com.tr)